



TOM TWISLETON

100

Skate & Walking Trails

INSPIRED BY LEGEND
TOM TWISLETON



settlestories.org.uk



6

GIGGLESWICK
CHURCH

7

CASTLEBERGH
HOSPITAL



RIVER

RIVER





RIBBLE

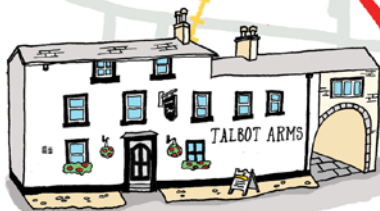
5

RIBBLE



4

SETTLE
MARKET PLACE

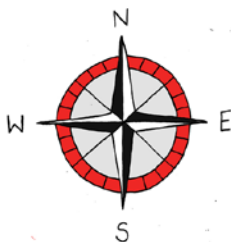


2

TALBOT
PUBLIC HOUSE

TWISLETON'S
YARD

1



SETTLE
PARISH CHURCH



KEY

- THE TRAIL
- FOOTPATH
- MAIN ROAD
- RAILWAY LINE
- RIVER

SKATE TRAIL

A. From the Market Square, turn onto High Street. You'll pass the Talbot Arms on your left. At the end of High St turn left and up Victoria St. Follow this part-cobbled road until it merges with Albert Hill (the road to Kirby Malham). Go about 25 metres up Albert Hill. Twisleton's yard (1) is on your right. This was built in 1832 for James Twisleton. Turn to face downhill. The trail starts here!

B. Head back down the hill, turning immediately left onto Commercial Street. In 50 metres turn right, through the gate and onto the footpath that leads down into Lower Greenfoot Car Park. Follow the path, bear to the right when the path splits and exit the car park, along Chapel Square. Cross the road to find yourself on High Street. See the Talbot Arms (2) on your right. Tom tried to persuade people not to go in here too much!

C. Head back into Settle Market Place (3). Here a market is still held every Tuesday, as it was in Tom Twisleton's day. Tom wrote a poem about a woman drunk in Settle Market Place. Across the road you will see Ye Olde Naked Man Cafe (don't cross the road), which was a pub in the past.

D. Turn right and follow the road down to where it narrows. Skate towards Settle Parish Church (4), crossing Town Head Rd. Here in the churchyard, J.G. Owen is buried. Tom wrote a poem about this young man from Wales.

Instructions continue on page 4

E. Continue down the road and go under the viaduct. Cross the road and continue towards the River Ribble, going along the footbridge (5). Across the road you will see Settle football ground. This is where the temperance fairs were held in Tom Twisleton' s day.

F. Once you're over the footbridge turn left down the riverside path before the college and skate along the river until you see a bridge on your left and a path on your right (signed to Giggleswick Village). Take the path on your right up towards Giggleswick and turn right at the end.

G. Continue on this road (Church Street) until you reach Giggleswick Church (6). Take Raines Road to the left at the next road junction soon after the church.

H. Continue along Raines Road until you see Castleberg Hospital (7) on your right, which had been a workhouse in Victorian times. The fields you pass would have had cattle and sheep during Tom's time. The trail ends here!

Skate trail designed by Jimmy Howarth

SETTLE STORIES

Settle Stories use the transformative power of story to change lives. We gather people together, bring into focus hidden stories and enable everyone to have a voice.

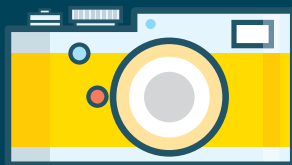
Our flagship festival and year round events are refreshing, dynamic and unexpected. We work across the North of England and use cutting edge technology to invite audiences both young and older to The Joinery, our new venue a place to meet and create.

Our ethos of empowering others is unstoppable. Our Learning Programme touches the lives of over 6,000 children in schools every year. We help community groups discover the power of the arts and our local heritage. We welcome everyone to discover how story can change their life with workshops, courses and retreats.

We are an ambitious charity that is committed to collaboration and doing things differently. Will you help us change the world with story?

Start your journey with us:
Settlestories.org.uk

Follow us on



Share photos you've taken on the trails with us. We're on Facebook, Twitter & Instagram @ Settle Stories



Reg. Charity No. 1141649
Company No. 7515653
Design by Lovell Beck